

NX Steel - Installation

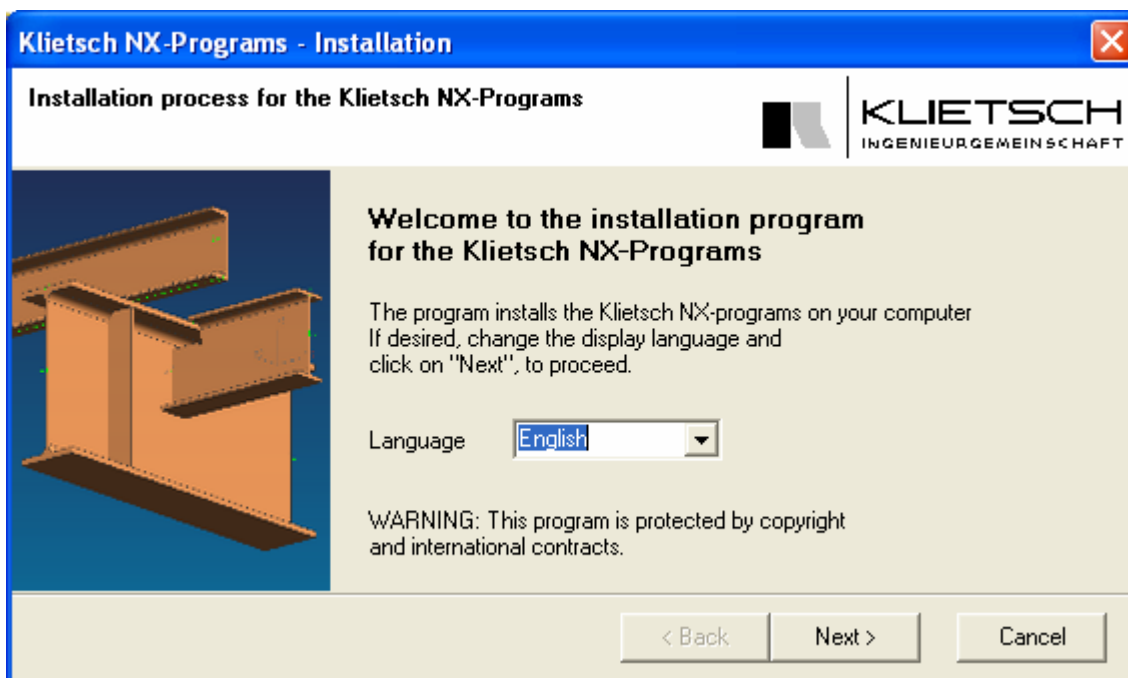
The installation of NX Steel consists at least of two or more parts:

- installation of the Klietsch license server
- installation of one or more NX Steel program parts

To install the software you have to log in with administrator authorizations!

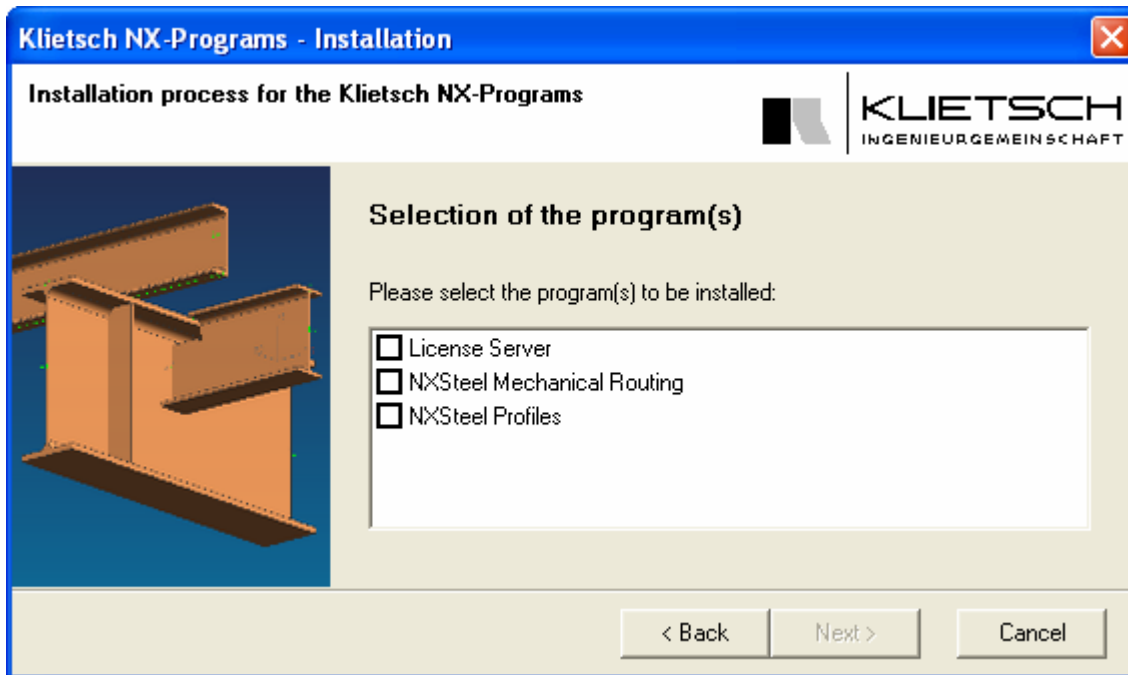
Insert the NX Steel CD ROM into the drive. If the installation program does not start automatically please change to the root directory of the CD ROM and start manually *install.exe*.

After a short time the first window of the installation program appears and offers the language selection.



Select your preferred language and continue with *Next*.

A new window appears and offers the selection of program parts for installation.



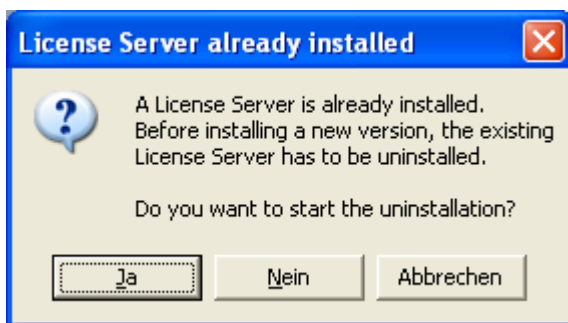
Please note that normally the license server should be installed only once in a network. All workstations can use this license server if they are able to address the computer over the network.

The program parts of NX Steel have to be installed on every workstation where they are intended to be used.

License server installation

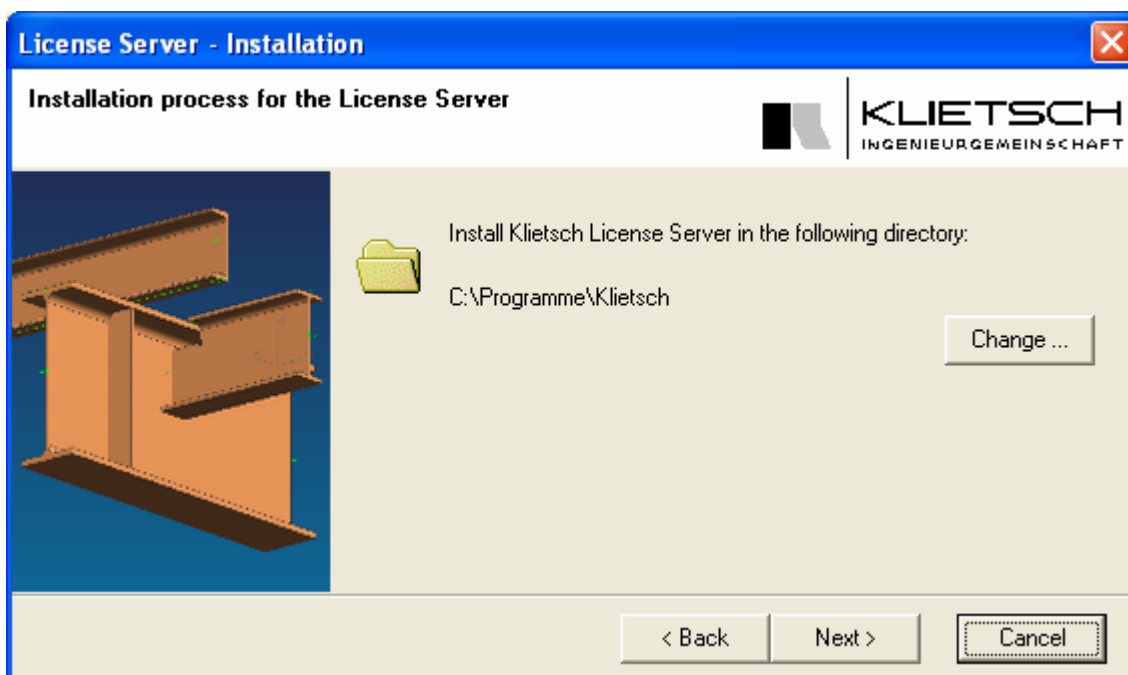
In the first step it is again possible to select the language for the installation program.

If the installation program finds an existing license server you will be asked to remove the existing license server before the new installation.

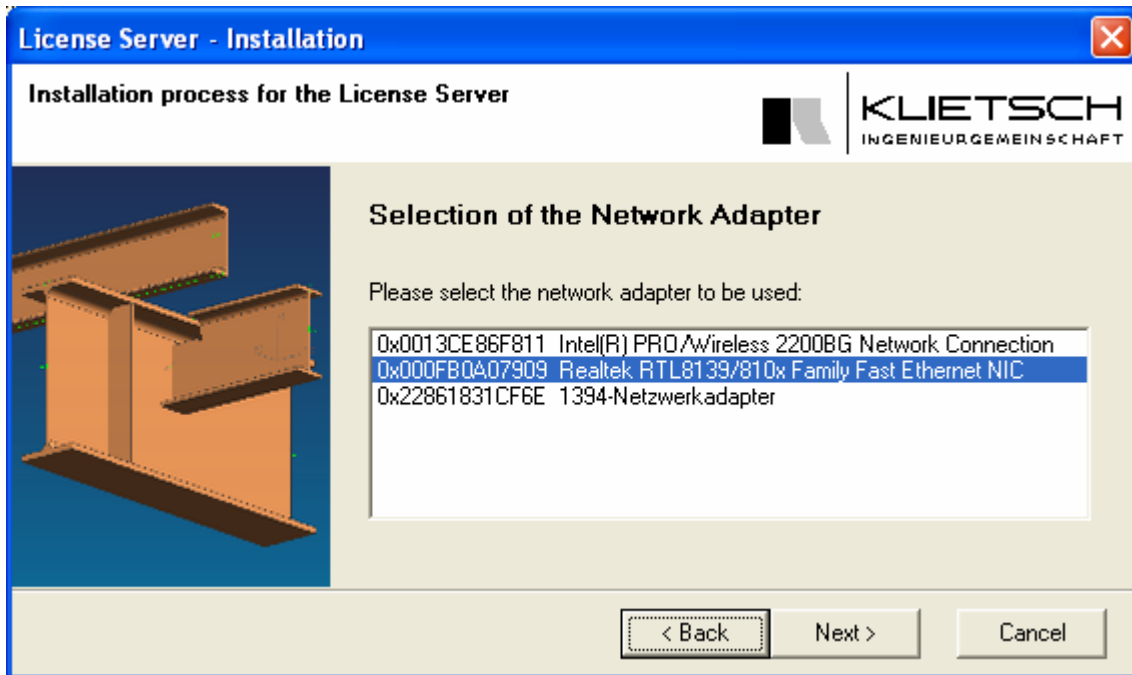


If you really want to install the license server new select Yes and follow the instructions to remove the existing license server.

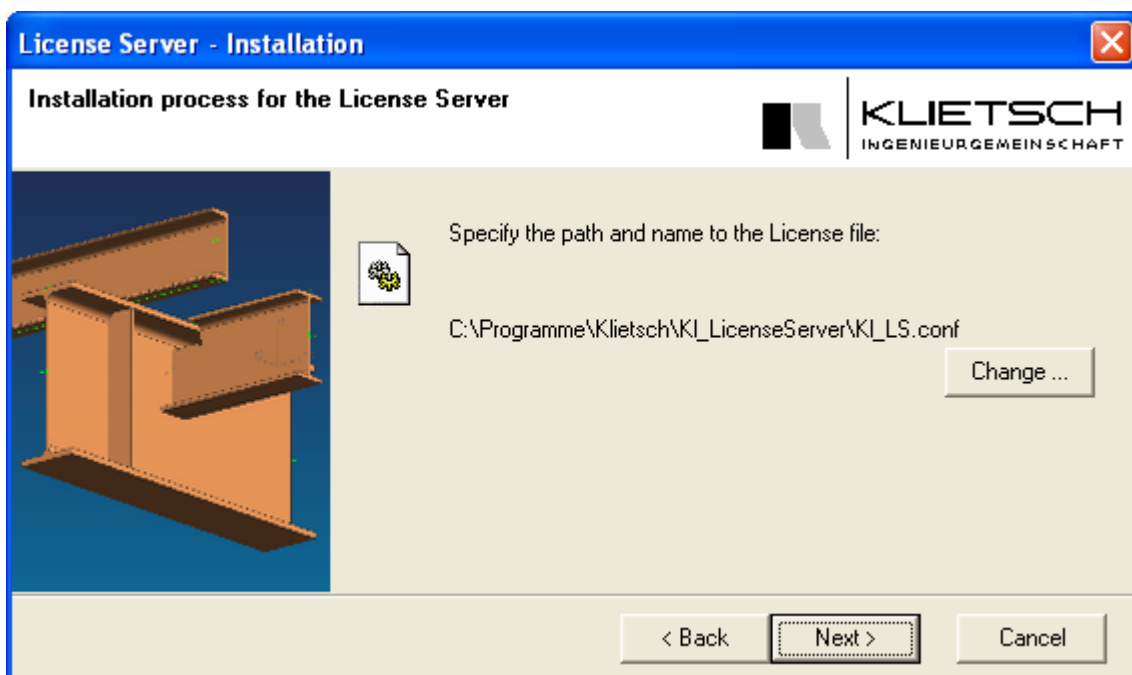
After this step you can continue with the new installation. Confirm or change the installation directory for the license server and proceed with *Next*.



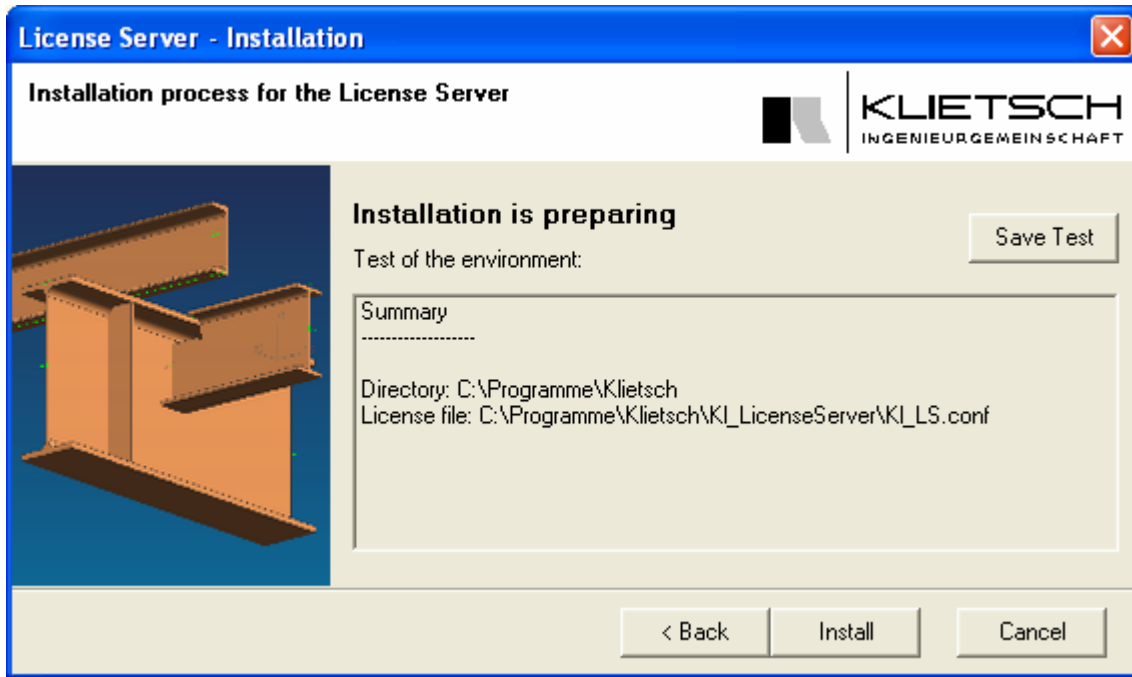
In the next windows the installation program shows a list of available network adapters. Please select the adapter you want to use for the licensing of your NX Steel software



In the next step you are asked to specify the path and name to the license file. Normally you can follow the suggestion of the installation program.

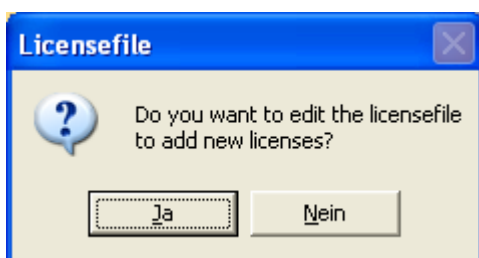


If the test of the environment was successful you are asked to *install* the license server.



If an error occurs you can use *Save Test* to create a file with the summary information of the test. This file can be used to contact our support team.

After the installation you are asked to edit the license file to add new licenses. With *Yes* the editor starts with the opened license file and you can add new license entries.



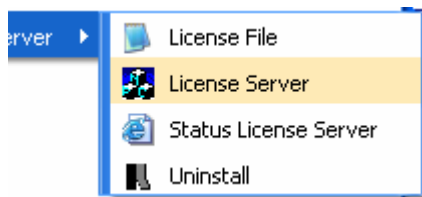
After this step you should get the message

Installation complete!

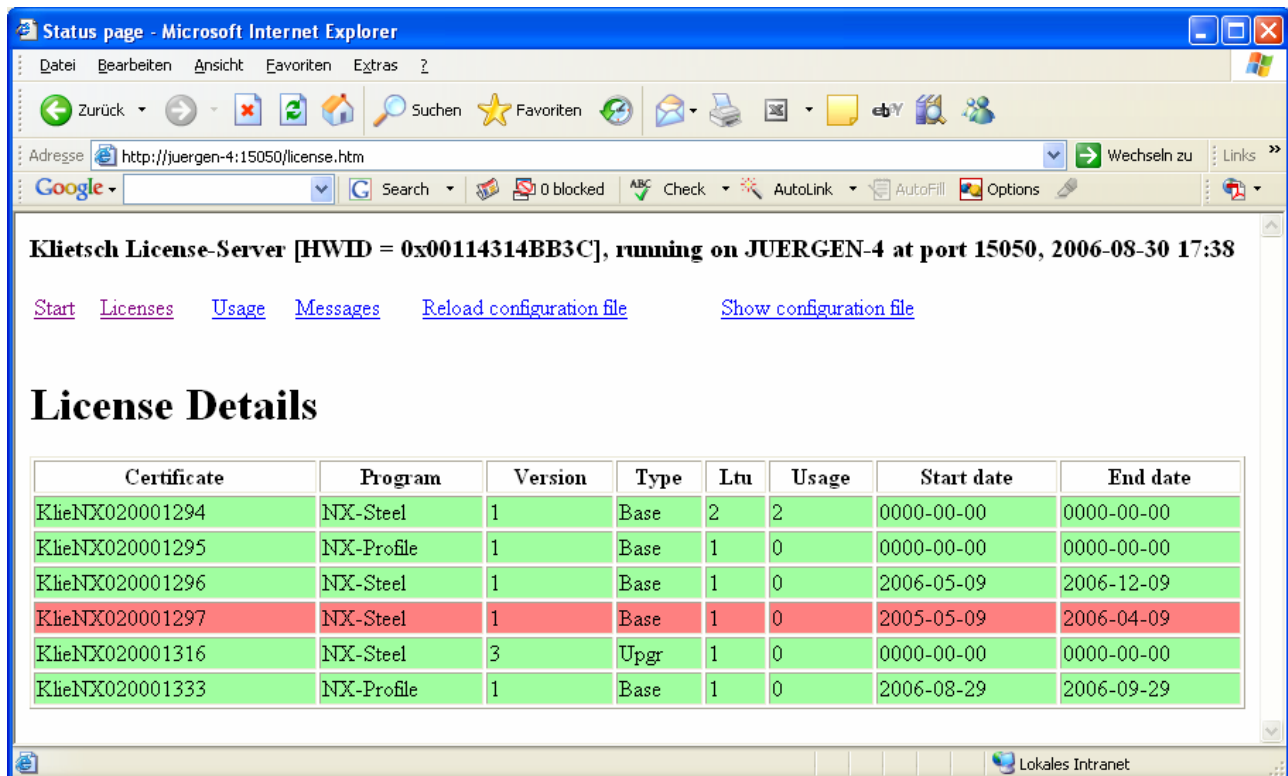
Controlling the license server status

The license server is a service running in the background. To get a status information please select

All programs → Klietsch → license server → Status License server



This command opens your WEB Browser with an information page about the status, available and used licenses, messages, ...



Klietsch License-Server [HWID = 0x00114314BB3C], running on JUERGEN-4 at port 15050, 2006-08-30 17:38

[Start](#)
[Licenses](#)
[Usage](#)
[Messages](#)
[Reload configuration file](#)
[Show configuration file](#)

License Details

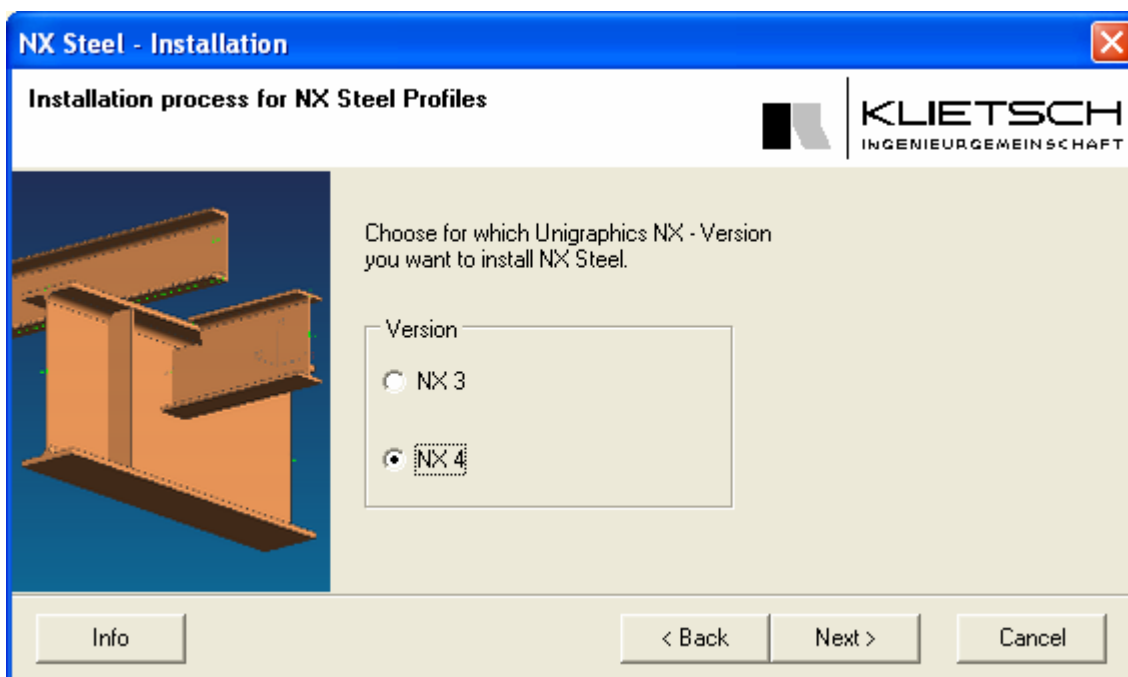
Certificate	Program	Version	Type	Ltu	Usage	Start date	End date
KlieNX020001294	NX-Steel	1	Base	2	2	0000-00-00	0000-00-00
KlieNX020001295	NX-Profile	1	Base	1	0	0000-00-00	0000-00-00
KlieNX020001296	NX-Steel	1	Base	1	0	2006-05-09	2006-12-09
KlieNX020001297	NX-Steel	1	Base	1	0	2005-05-09	2006-04-09
KlieNX020001316	NX-Steel	3	Upgr	1	0	0000-00-00	0000-00-00
KlieNX020001333	NX-Profile	1	Base	1	0	2006-08-29	2006-09-29

Lokales Intranet

NX Steel program parts installation

The installation of the different program parts looks very similar. The following steps show the installation of **NX Steel Profile**.

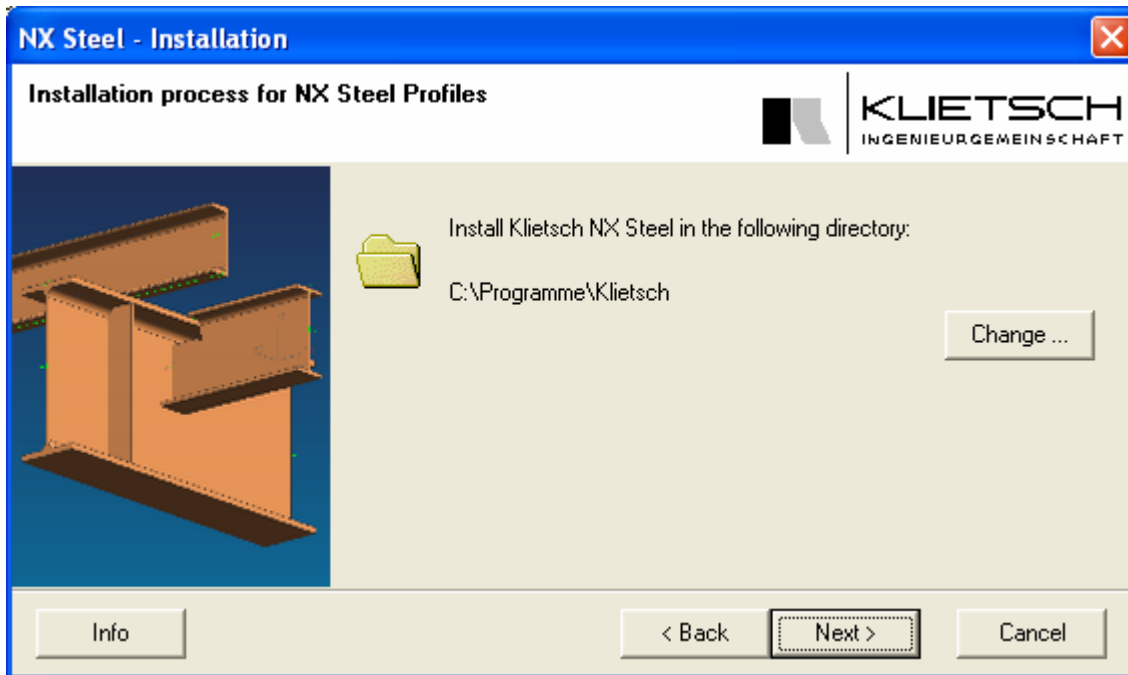
After selecting the language for the installation program you will see a selection for the supported NX versions.



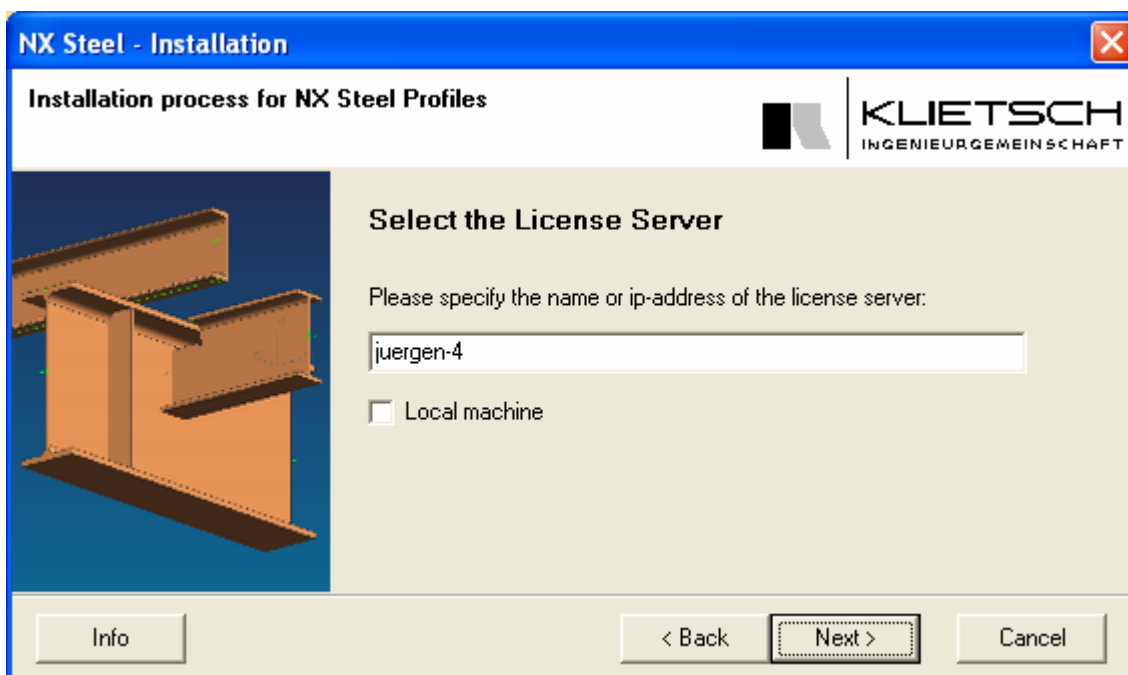
Select your installed NX version and proceed with *Next*.

With *Info* it is possible to get more information about the installation process.

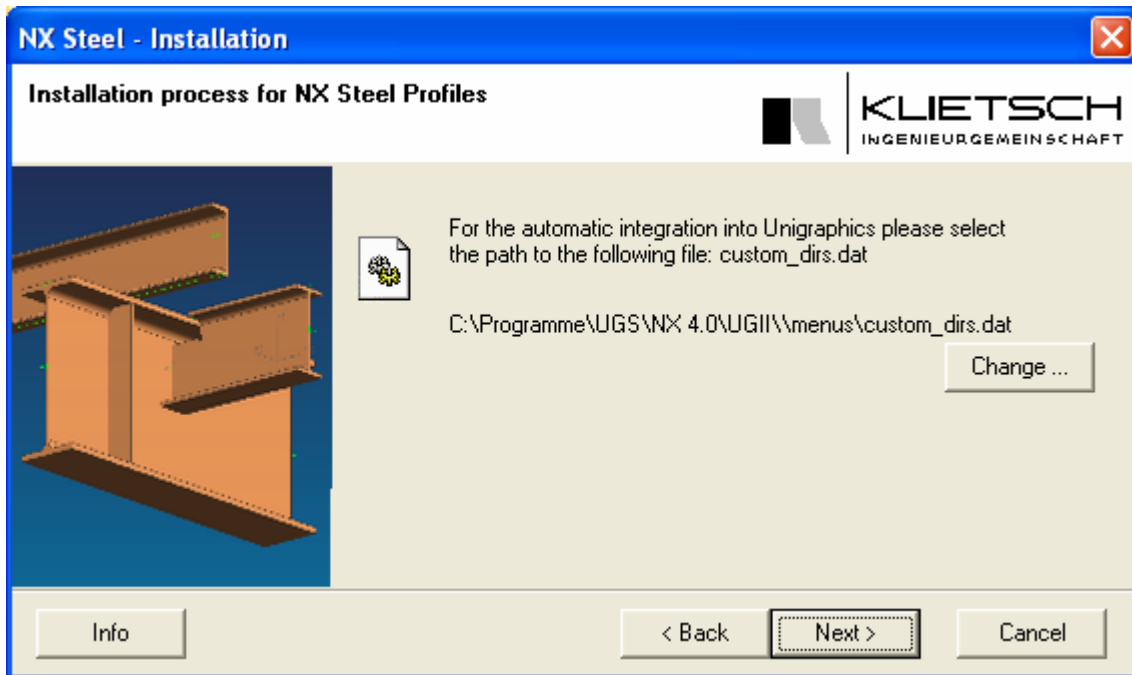
In the next windows you have to confirm or change the installation directory for the installation and proceed with *Next*.



After this step you are asked for the license server. Please enter the name or IP address of a license server in your network or select *Local machine* if the license server is running on your workstation.



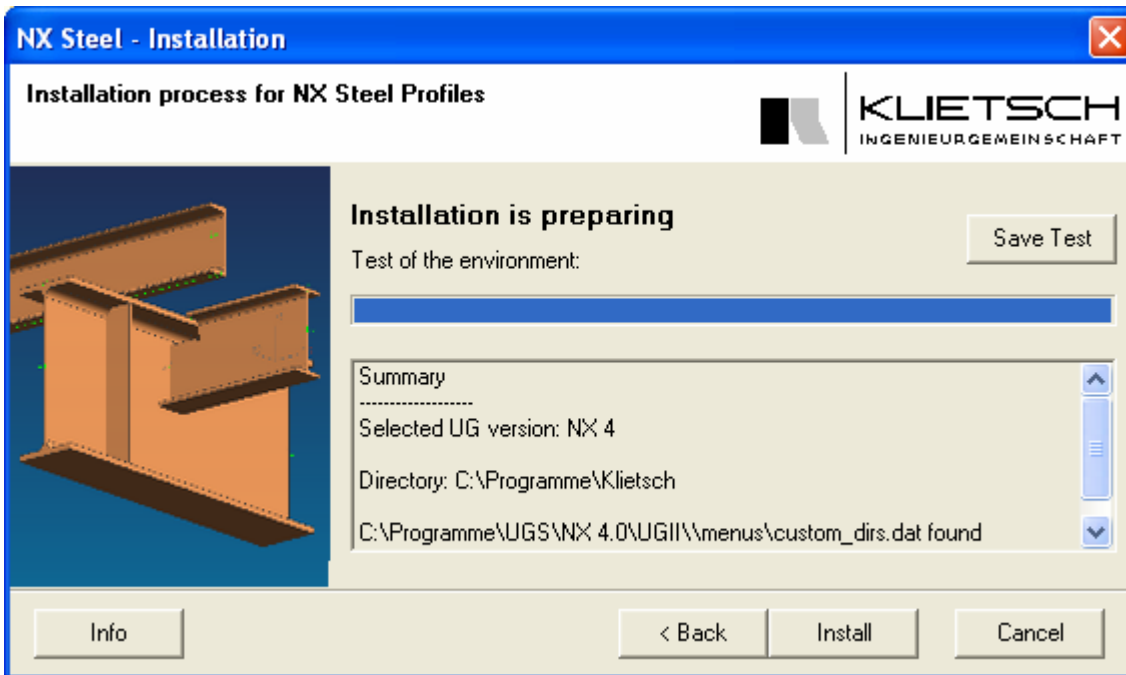
The next selection is responsible for the integration of NX Steel into NX. Please enter the path to *Custom_dirs.dat*



Normally the system makes automatically a suggestion but with *Change* it is possible to select the path manually.

Select *next* to proceed.

Afterwards the installation program checks the installation data and shows the results:

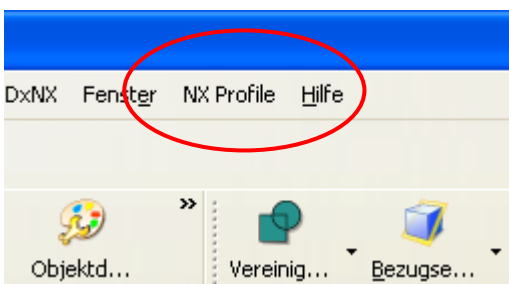


If an error occurs you can use *Save Test* to create a file with the summary information of the test. This file can be used to contact our support team.

Install starts the installation and after a short time you should get the message

Installation complete!

After a successful installation and a restart of NX you should find in the NX main menu pull down menus für NX Steel.



How to change the license server

If you want to connect to another licenser server you have to edit entries in the Windows Registry.

Please look in the area

HKEY_LOCAL_MACHINE → SOFTWARE

for entries titled

Klietsch GmbH

In this area you will find for each product a data set entry with the name

Server

Please edit this entry with your new license server and restart NX.

